



Dear Geography teachers,

Thank you for those who came to our “MapInfo for GIS teaching” seminar at the MapKing office last Friday. It was a very successful event, with over 15 geography teachers/educators participated. In those three full hours, many fruitful thoughts and questions were raised. Below is a summary of the Q&A of the event:

1. Are there enough MapInfo Professional® tutorials in the market and where do we find them?

Ans: There are many FREE MapInfo Professional® tutorials and training materials in the market. <http://goto.mapinfo.com/webtutorials/> -- is an Official MapInfo Professional® tutorial site recommended by Mr. Patrick Ng of the Pui Ching Education Centre. This tutorial comes with 16 lessons. Each lesson has an embedded video. You can download and install the training data and follow the exercises step by step with the lessons.

2. Does MapInfo Professional® do Spatial Analysis?

Ans: Yes, MapInfo Professional® can perform Spatial Analysis. It is an operation that examines data with the intent to extract or create new data that fulfills some required condition(s). It includes such GIS functions as **polygon overlay** or **buffer generation** and the concepts of **contains, intersects, within** or **adjacent**.

3. If we purchase MapInfo Professional® 9.0 education license now, will it also include free upgrade to MapInfo Professional® 9.5?

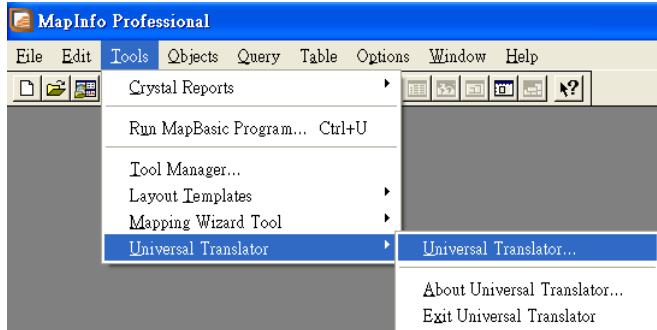
Ans: Any Purchase Order received after the official Release Date (Ship Date: 9th June, 2008) of the MapInfo Professional® 9.5, will ship with MapInfo Professional® 9.5 software.

4. Who is going to help us (the teachers) after we have purchased MapInfo?

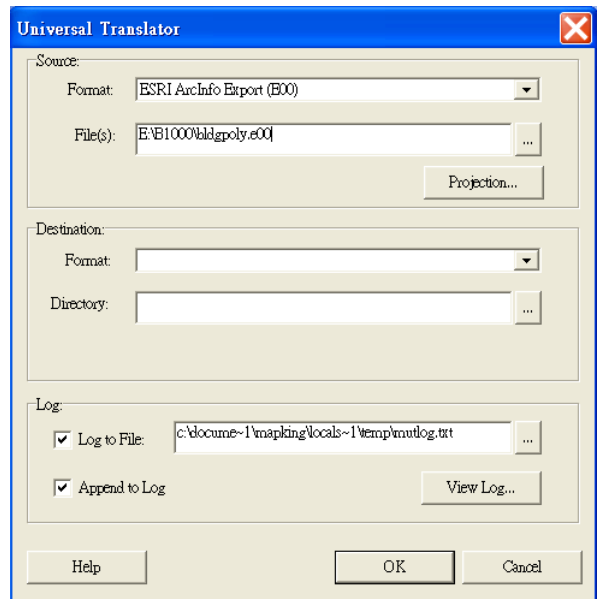
Ans: Mr. Patrick Ng of the Pui Ching Education Institute suggested the teachers should help themselves. Without a doubt, the on-line tutorial mentioned in question **ONE** is very helpful. Teachers should find it easy to learn and use MapInfo Professional®. Unlike other GIS software, MapInfo Professional® is easy to use and the tutorial is very comprehensive and easy to understand.

5. How to import Hong Kong Lands Department's GIS data? And how easy is it?

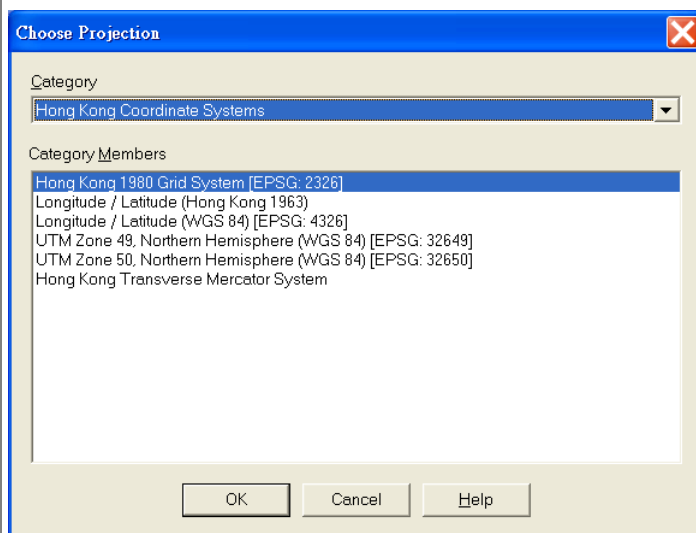
- i) From the MapInfo menu, choose **Tools > Universal Translator > Universal Translator**.



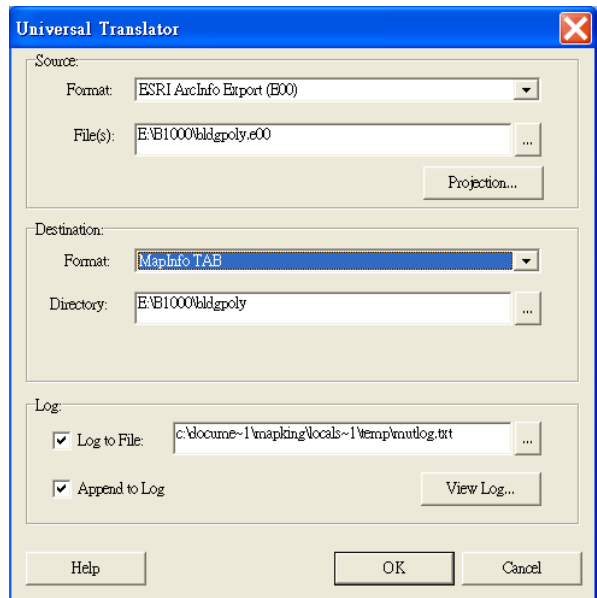
- ii) Choose **ESRI ArcInfo Export (E00)** as the source format and select the *.e00 files from your source directory.



- iii) Click **Projection** button and select **"Hong Kong Coordinate Systems"** from the Category and **Hong Kong 1980 Grid System** from the Category Members. Then click OK.



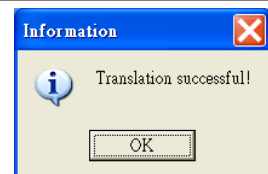
- iv) Choose **MapInfo TAB** as the destination format and choose the destination directory to be exported.
v) The Log file keeps track of error message (if any).



- vi) Click OK and Universal Translator will start the conversion process.



- vii) Translation complete and successful!

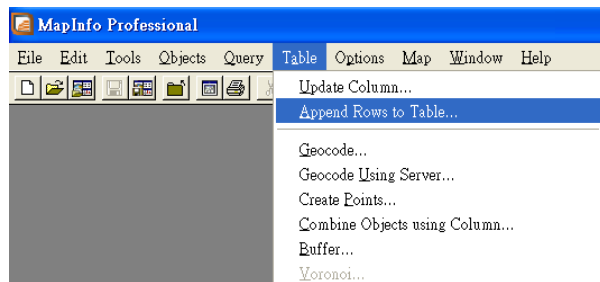


6. How easy is it to merge/append two adjacent map data?

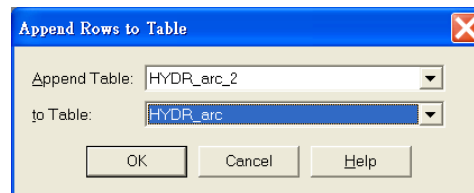
i) First, open two adjacent layers from your source directory.



ii) Then, from the **Table** menu, click “Append Rows to Table”.



iii) A window popup. Select the layer to be appended at from the “Append Table”; also select the destination table at the “to Table”. Then click OK.



iv) The two tables (layers) will then be appended to form one single destination table (layer).



7. What are the Free Map data included when purchasing MapInfo Professional® from MapKing?

Ans: Free Map Data collection includes: land boundaries, parks, rivers, reservoirs, main roads, railway/subway line and railway/subway station (for the Whole Hong Kong Area). A sample map

database (Only Central Area) is also included with a full set of Base map features with all of the above mentioned plus POI (Point of Interest such as restaurants, government offices, education institutes, hospitals etc.), Building polygons, and Roads (both major and minor roads).

8. Can MapKing™ Mobile software and MapInfo Professional® Desktop software exchange data?

How easy is it?

Ans: MapKing™ Mobile software and MapInfo Professional® can communicate and work with each other seamlessly. Any Point Of Interest (My Favorite POI) generated by MapKing™ Mobile can be imported into MapInfo Professional® as easy as opening a file. All information can be retained without lost and this interface is bi-directional. This is a very good solution to implement “Mobile learning” in all Secondary schools.

9. Can other software read MapInfo map data that we created? Say, read as a Web page like an html page?

Ans: Yes, In MapInfo Professional® this is just a case of copying the map window and pasting the map as a Windows Metafile (WMF) into the appropriate software package (such as MS Word, MS PowerPoint etc.) and the quality of both the vector and raster components is excellent and the vector component is still editable (when pasted back to MapInfo Professional® as MAP).

10. Why should we buy MapInfo Professional® education license?

Ans: MapInfo Professional® 9.0 may not be the most powerful GIS software in the World, but it is certainly an easy-to-use and a very comprehensive Desktop GIS Package in the market. It is widely regarded by the Business Sector as the most needed embedded Map component/object dealing with location base information. Geography teachers do not want their time wasted in learning how to use a robust GIS package in teaching. A Plug-n-Go GIS software like MapInfo Professional® is suitable and highly recommended by GIS instructors in Hong Kong to teach secondary school students how to use GIS to understand the Earth from a spatial perspective.

Thank you for your interest in our “MapInfo for GIS teaching” seminar. We are glad to announce that an encore seminar will be held on Monday, 16th June, 2008 at the Pui Ching Education Centre. To Reserve Seats, please send your school name and the name of the attendees to MI@mapasia.com or contact Mr. Lee of MapKing Int. at 28542221.

